



(G L E N H O L L O W)

GLENMANUS VILLAGE
PORTRUSH

WITH PORTRUSH TOWN CENTRE SITUATED WITHIN WALKING DISTANCE FROM GLEN HOLLOW THIS LOCATION HAS IT ALL

Regarded as one of Northern Ireland's most beautiful seaside locations, the world-famous town of Portrush offers something for everyone.



Royal Portrush
Golf Club



Portstewart Strand



Surfing, Portrush



Giant's Causeway
Visitor Information Centre

Whether it's taking a sunset stroll along the stunning Portstewart Strand, relishing in the local cuisine available at the popular Ramore Restaurants or enjoying a fun filled day with all of the family at the world-renowned Giant's Causeway, this town provides endless possibilities to create lasting memories.

Exclusive of the Portrush area, the famed Royal Portrush Golf Club is located just a short distance away. Surrounded by a wealth of beauty, the course is overlooked by another of Portrush's most prominent and picturesque landmarks – Dunluce Castle.

What's more, this coastal town is perfect for revelling in a range of water sports facilitated by the Atlantic Ocean, such as surfing, fishing or sailing.

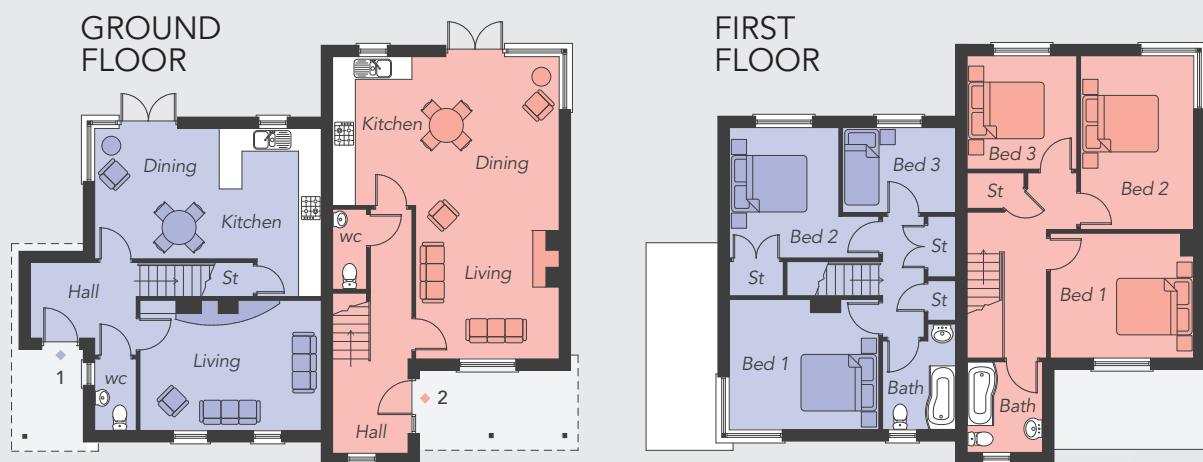
Situated within walking distance from Glen Hollow, Portrush's thriving town centre hosts an abundance of restaurants, pub and cafés. As the Glenmanus area is within easy access to local shops, primary schools and leisure facilities, this location has it all.



Ramore
Restaurants



Computer Visual



GROUND FLOOR - SITE 1

Entrance Hall

Living Room *Max* 15'8" x 11'3"

Kitchen / Dining 19'8" x 10'7"

WC

FIRST FLOOR - SITE 1

Bedroom 1 12'11" x 11'3"

Bedroom 2 *Max* 12'11" x 11'3"

Bedroom 3 9'10" x 7'4"

Bathroom *Min* 7'8" x 6'3"

GROUND FLOOR - SITE 2

Entrance Hall

Living Area 13'3" x 12'1"

Kitchen / Dining 19'8" x 12'11"

WC

FIRST FLOOR - SITE 2

Bedroom 1 12'5" x 10'9"

Bedroom 2 15'1" x 9'10"

Bedroom 3 9'10" x 9'6"

Bathroom 7'2" x 6'6"

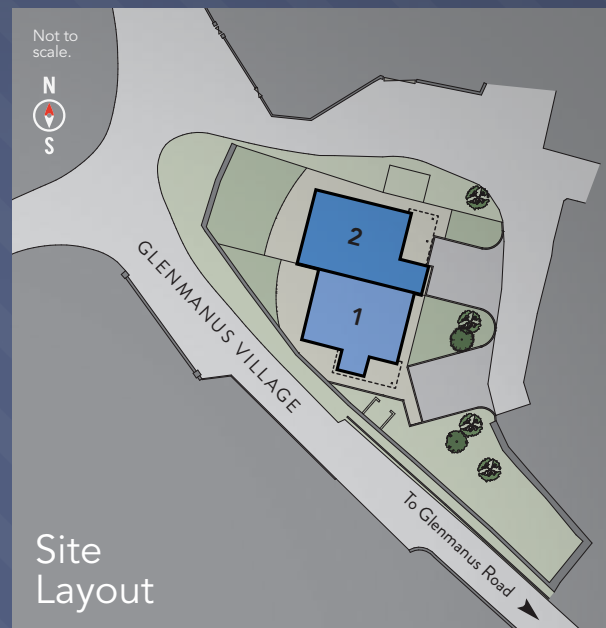


Computer Visual

SITE 1 - Total Floor Area: 1069 ft²
SITE 2 - Total Floor Area: 1140 ft²

Luxury Specification

- Oil fired central heating
- PVC fascia doors & windows
- Fitted kitchen from range
- Fitted appliances including oven, hob, fridge freezer and dishwasher
- Fitted sanitary ware including shower cubicle
- Splash back tiling around sinks, bath & shower
- Flush internal doors with complimentary door ironmongery
- Internal painting throughout
- Fitted flooring to include either carpet or wood effect flooring to hall, stairs, landing, bedrooms and living area (as applicable)
- Choice of floor tiling from range to kitchen, WC, bathroom and ensuite (as applicable)
- Fitted wood burning stove in living room
- Wiring for burglar alarm (additional cost to fit alarm)



These images reflect the style of finish at Glen Hollow and are used for illustrative purposes.



028 7083 2000

64 The Promenade, Portstewart
www.armstronggordon.com

In compliance with Consumer Protection from Unfair Trading and Business Protection from Misleading Marketing Regulations, please note that any visual or pictorial representations as featured in this brochure such as 3D computer generated images are purely intended as a guide for illustrative, concept purposes only and often may be subject to change. Any floor plans and site layouts used are not to scale and all dimensions are approximate and subject to change. Also note the brochure does not feature exact location or presence of specific or detailed items such as street lighting, sub stations or full finishes etc. All specific details to your chosen plot or immediate boundaries etc. should be checked with the agent, developer, or your legal advisor prior to purchase.

Copyright notice: All rights reserved. The contents of this brochure may not be reproduced, copied, redistributed, or otherwise made available in whole or part without the prior written consent from the developer.

